

# A Lifetime Pleasure



  
**GARDENIA  
SPRINGS**  
NEW CAIRO

 **16120**  
[www.igi-realstate.com](http://www.igi-realstate.com)

Developer





## About IGI REAL ESTATE

IGI Real Estate is the development arm of the International Group for Investments (IGI) and has pioneered in the delivery of premium residential and tourism properties in Egypt for the last fifteen years.

Established in 1973, IGI is one of the foremost private sector companies in Egypt and is the parent of several growing, diversified companies whose activities range from construction contracting to petroleum trading and from industrial support services to agricultural activities.

IGI Real Estate was originally conceived in 1994 with the name of 'Intours' – a name reflective of the earlier activities of the company in tourism property development. With a few prestigious tourism properties under its belt like Taba Heights and the Marriott Hotel in Taba, the company then diversified into residential project developments.

To date, IGI Real Estate has earned an unparalleled reputation for professionalism, expertise and excellent quality in its track record of successful projects. The portfolio of IGI Real Estate includes Hay Al Ashgar, Gardenia Park, Gardenia Park II, Gardenia Springs, Ashgar Heights and the Marriott Hotel in Taba. With a few large-sized projects underway, IGI Real Estate strives to optimize quality, serve new markets and continually improve all aspects of its work.

IGI Real Estate aims to provide its clients not only with the perfect home but with the community and neighborhood that best suits their needs and desires. With its keen understanding of the market and its pioneering experience in Egypt, the company seeks to produce projects and services that fulfill the needs of the various market segments it serves. Its dedication to serving its clients has made IGI Real Estate a dependable name with a reputation of delivering on its promises.





Well situated among the Katameya cliffs, lies the tranquil oasis of Gardenia Springs. This carefully designed haven away from the hustle and bustle of the city and its polluted atmosphere has been meticulously conceived to meet the clients' needs and to make family's wishes come true. With idyllic landscape and refined architectural structures, Gardenia Springs is designed to appeal to all senses. In addition to its superior aesthetic qualities, Gardenia Springs is constructed upon the values of privacy, comfort, accessibility and safety. In making privacy and comfort a priority, the community comprises just 120 villas spread over an expanse of approximately 58 acres – a ratio of almost one villa to half an acre.



# Location Map





# Master Plan



-  Available units
-  Central villas location
-  North villas location
-  South villas location



Unit 29



Type : C1

Total building area : 648.16 sqm

Total land area : 1381.51 sqm



## Unit 29



Type : C1

Ground Floor : 347.16 sqm

## Unit 29



Type : C1  
First Floor : 301.00 sqm



Unit 47

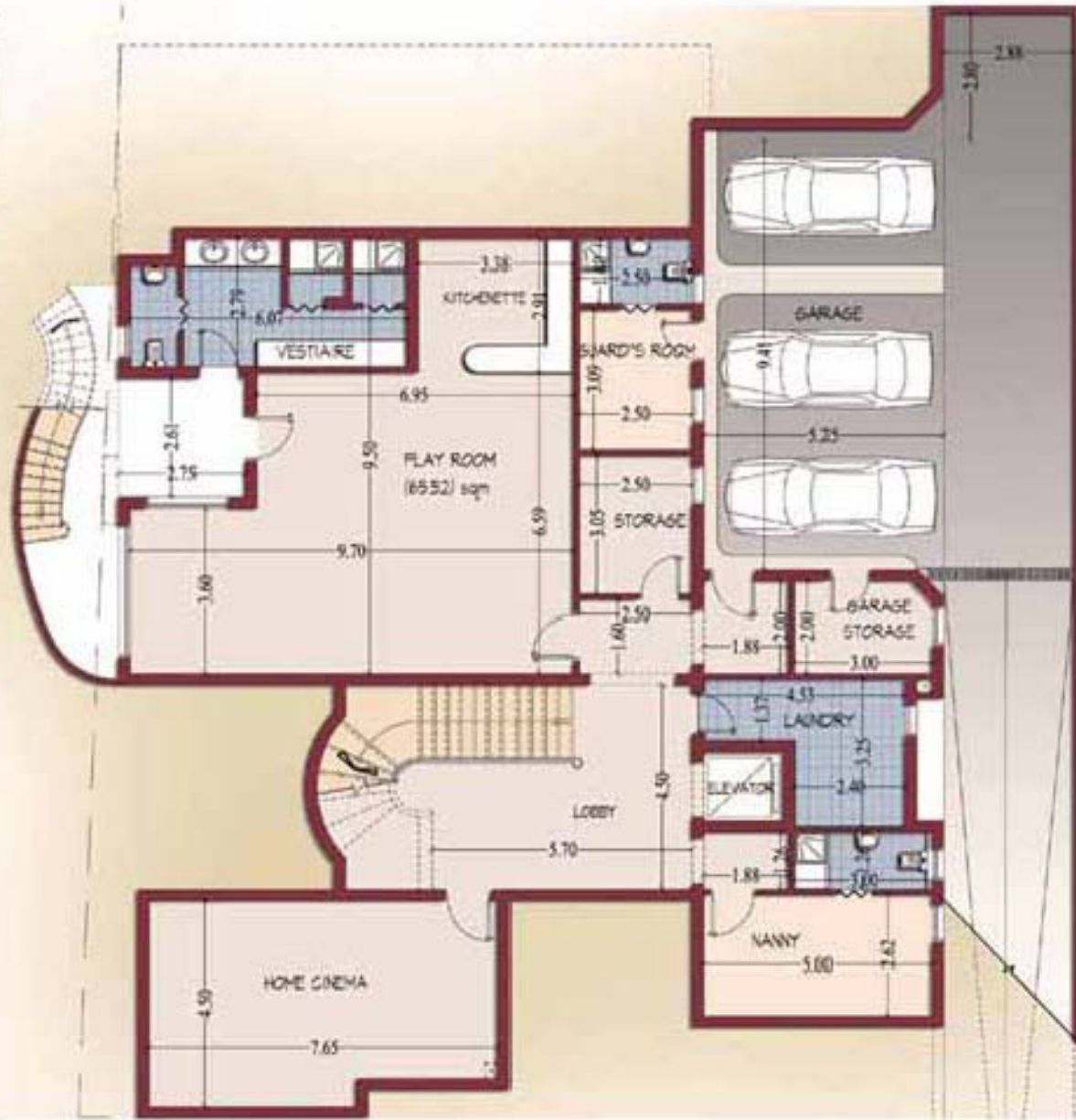


Type : C1

Total building area : 1033.21 sqm

Total land area : 1247.88 sqm

## Unit 47



Type: C1  
Basement Floor: 385.05 sqm



## Unit 47



Type : C1

Ground Floor : 347.16 sqm

## Unit 47



Type : C1  
First Floor : 301.00 sqm



Unit 59



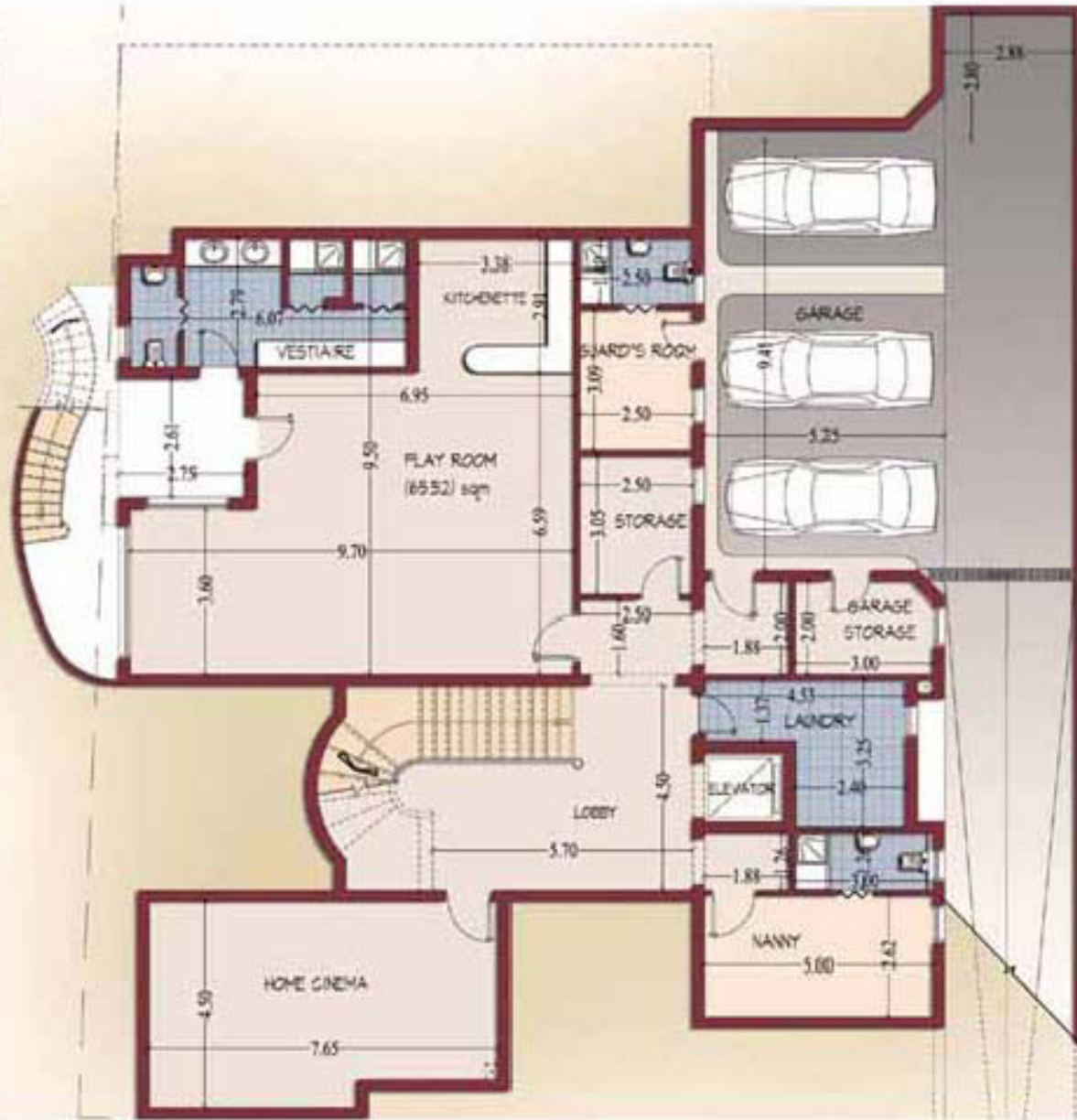
  
**GARDENIA  
SPRINGS**  
NEW CAIRO

Type: C1

Total building area : 1033.21 sqm

Total land area : 1330.01sqm

# Unit 59



Type : C1  
Basement Floor : 385.05 sqm



## Unit 59



Type : C1

Ground Floor : 347.16 sqm

## Unit 59



Type : C1  
First Floor : 301.00 sqm



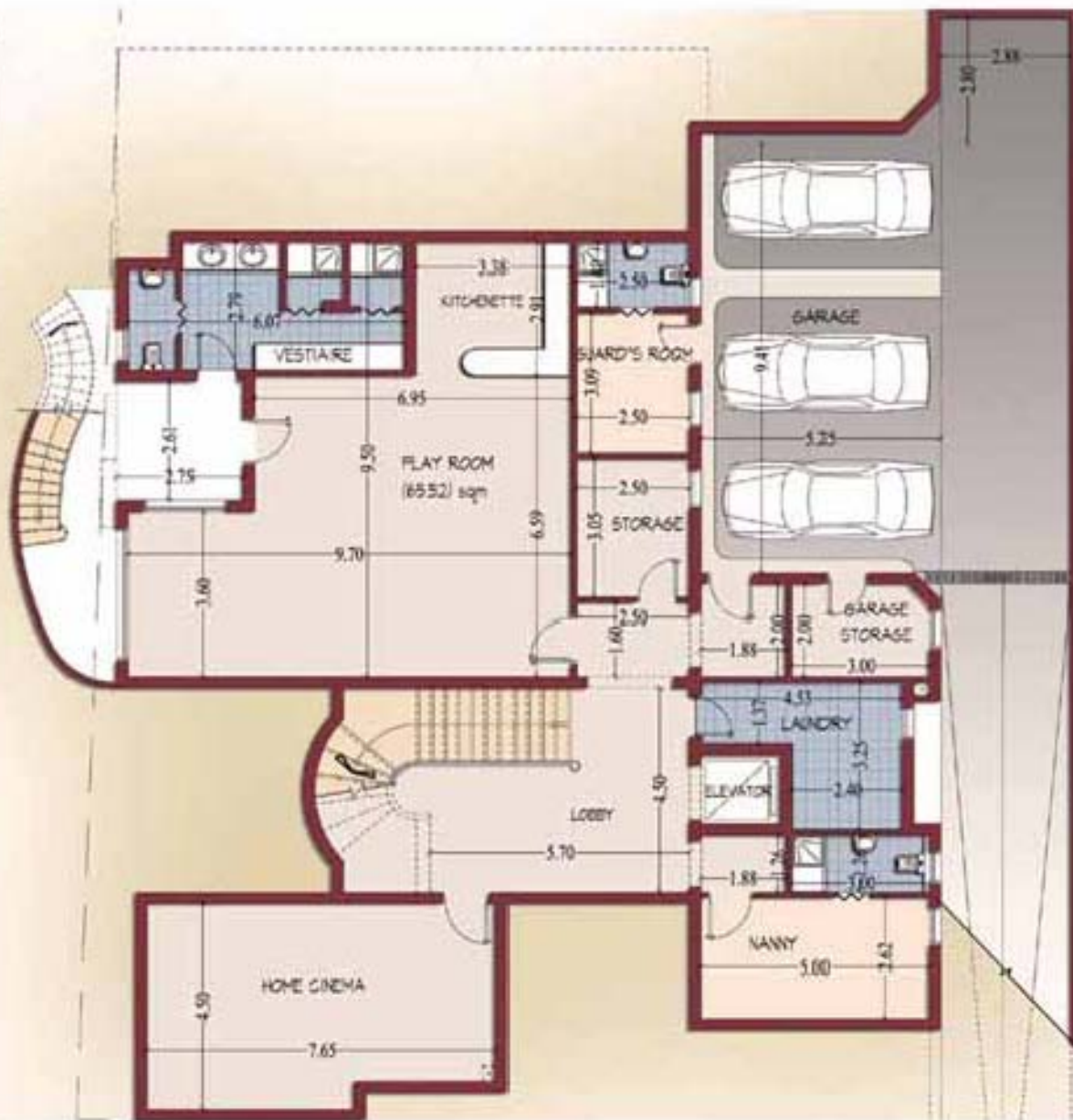
Unit  
63,64,65,69



**GARDENIA  
SPRINGS**  
NEW CAIRO

Type : C1  
Total building area : 1033.21 sqm  
Average land area : 1373 sqm

**Unit**  
63,64,65,69



Type : C1  
Basement Floor : 385.05 sqm



Unit  
63,64,65,69



Type : C1  
Ground Floor : 347.16 sqm

# Unit 63,64,65,69



Type : C1  
First Floor : 301.00 sqm



Unit 111A



Type : N1

Total building area : 446.55 sqm

Total land area : 961.12 sqm

# Unit 111A



Type : N1

Ground Floor : 240.55 sqm



## Unit 111A



Type : N1  
First Floor : 206.00 sqm

Main gate



  
**GARDENIA  
SPRINGS**  
NEW CAIRO



Lake



  
**GARDENIA  
SPRINGS**  
NEW CAIRO



street



**GARDENIA**  
**SPRINGS**  
NEW CAIRO





street



  
**GARDENIA  
SPRINGS**  
NEW CAIRO

villa



  
**GARDENIA  
SPRINGS**  
NEW CAIRO



villa



  
**GARDENIA  
SPRINGS**  
NEW CAIRO

Sales offices



 **16120** | [www.igi-realestate.com](http://www.igi-realestate.com)

- ١٨ نال نوال - العجوزة
- حي الألتجار - المنطقة التجارية
- منتروع كنانة